



*Serving the
Australian Defence Force
since 1940*

ON PATROL

June 2020

From the CCOMM's desk...

Who indeed could have foreseen the coming of COVID-19 and the effects it would bring? Our Defence Force like everyone else, has been impacted by the restrictions in place nationwide, and we have had to close our Rec Centres as a result. Also our Brew Trucks have had to be laid aside temporarily. Yet Everyman's welfare work has still been in demand and under social distancing guidelines, one sponsor unit has asked us to open their Everyman's/Everywoman's Rec centre. They see the need for our welfare in that place despite the effects of the coronavirus. On a couple of bases, we have been asked to re-commence Brew Runs out field to support the troops. When COVID-19 is sufficiently dealt with, we can honestly expect a flood of requests for Everyman's to re-engage with Defence on bases, out-field, and amongst veterans being served by our EveryVets subsidiary group.

At RAAF Base, Amberley, we have seen one of our newest REPs Brad CLARKE, blessed to receive a grant to totally refurbish that very large Rec Centre to establish the "home away from home" that Everyman's and Everywoman's "huts" have always been. The base management at Amberley have seen the value of our work and have been prepared to do all they can to make this Centre comfortable and attractive to all ADF members once it is open again, post COVID-19.

In so many places, our Defence Force calls upon us, as they did with the bush fires earlier this year, to be a comfort and support to their members.

Everyman's is now working with one of the Army Chaplains to create top quality weekly on-line church services, which are now available to ADF members.

During the coronavirus pandemic, donations have fallen dramatically.

We need funds to make sure our Brew Trucks are refurbished to the safety levels required and restocked ready to undertake the large Defence exercises that will take place as soon as the restrictions are sufficiently lifted. Our Rec Centres will also need to be restocked for the comfort of ADF members seeking our welfare and counsel. Please support us in whatever way you can so that EWS can get back firmly on our feet.

Please pray with me that we will soon be fully equipped and mobilised again, and that all we do will help bring about the blessing God wants for our men and women faithfully serving this great nation.



CCOMM Ken Matthews

Everyman's Welfare Service
a company limited by guarantee

National Headquarters
02 6055 2988
admin@everymans.org.au

PO Box 8
BANDIANA MILPO VIC 3694
www.everymans.org.au

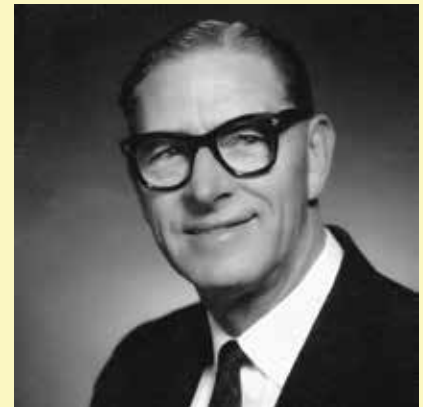
Celebrating 80 years Len Buck our first Chief Commissioner



*CCOMM Len Buck
in WW2 uniform*

Leonard Buck was the founding Chief Commissioner of Everyman's Welfare Service which began with the RAAF in Melbourne in 1939. Len, as he was known to staff and friends, managed to gain permission to go to the Malay Peninsula to provide comforts, literature, and Christian witness to Commonwealth military personnel. Len was able to purchase and fit out a mobile van (the first Everyman's brew truck) suited for the purpose of supporting the troops. He was given an honorary commission and attached to RAF Headquarters Far East. As the Japanese advanced down the peninsula, Len continued to serve in Singapore. When it became apparent that Singapore was about to fall, Len, together with his vehicle on the "Empire Star", the last ship out. As they left Singapore Harbour, the ship was attacked by the Japanese aircraft which resulted in the Everyman's brew truck being destroyed. Unfortunately, Len's assistant, an RAF airman was killed in the attack. On returning to Australia, Len arranged to meet notable people in the Capital Cities and was given mayoral receptions.

He enthused leaders of churches to get behind supporting the troops. Everyman's centres were established for servicemen and women in each capital city as well as on training establishments throughout the nation. To this day Everyman's Welfare Service remains committed to serving our Defence personnel and allies, still following much of the example that Len Buck set in Everyman's earliest years during the Second World War.



COVID-19 Restrictions at Kapooka

During the last few weeks most of our centres have been closed with the exception of Kapooka.

The centre has opened one day per week instead of the three days and brew runs were only supplied for the new recruits final challenge. Social distancing has to be complied with on the army bases too. REP Warren Clarke set up the brew truck and stood at a distance while a maximum of twelve soldiers utilized the truck.



Once all soldiers had finished the truck had to be wiped down & sterilized.

The soldiers are always relieved and delighted to see the Everyman's brew truck in the midst of all their training with that friendly face and warm brew of tea, coffee or milo.

Remembering Ed Bentley

REP Leane Dabitz visited Laurel Bentley late last year and reminisced, over a cuppa, of the days when Laurel's husband, Ed Bentley served with Everyman's. Ed served with Everyman's from 1948 to 1964. He started out at Greta in NSW, the training camp for the National Service. In 1949 Ed then transferred to Ingleburn where he met Laurel. He would often ask her to play piano as part of the nightly entertainment and in February 1950 they married. Laurel recalls the CO at the time, an atheist, would stand outside the hut and listen to what was being said. Wanting to shut down the work of Everyman's, he began to stir up trouble, but it backfired, and instead shone a light on the good work of the Everyman. Ed was officially recognised and given an honorary rank! In 1955 Ed and Laurel were moved again to Wacol in QLD. Ed's work with Everyman's ended in 1964 when they sought a more stable financial position by applying for paid work. However God had other plans and ironically led them into linguistics, once again, as self-supported missionaries with Wycliffe Bible Translators. Note: Ed created our Everyman's logo - see front page.



Above: Chaplain Hood with Ed Bentley



Left: Laurel Bentley with REP Leane Dabitz, Sept 2019

Below: One of our signs at Kapooka in the 80's



If you would like to receive a copy of the tract "What on Earth is Going on", which was prompted by Phil's article, please contact our office by email or telephone.

continued from back page

Please understand how extremely grateful I am (and indeed, we all are) for your ongoing support of us and the ADF, as we walk forward into tomorrow, and continue to serve those who serve our nation. I am confident you will continue to do all you can to support us. Can I encourage and challenge you to think creatively about your support? Have you thought about including EWS in your will? Have you thought about telling others about the work of Everyman's? Your friends, family, club, and church might all be interested to know how they can help others in a practical way. Jeff and I would love to come and share with your group, as soon as the current restrictions are lifted, but for now we would count it as a privilege to talk to you on the phone.

Bless ya heaps, Phil

What on Earth is Going On?



COM Phil Marshall
National Relations Manager

As we are currently experiencing a very different world than most of us have ever experienced, it is interesting to observe how people are coping (or not). Many individuals are very unsettled and unsure of the future: what does next week, next month, next year look like? When our plans for the future are challenged and our security is shaken, our sense of hope is somehow taken from us, which can cause major uncertainty. I absolutely love that in the midst of all the craziness there is security, refuge, shelter and protection in the seemingly invisible God!

From its humble beginnings in 1940, Everyman's Welfare Service has stood firm. When financial support was extremely low, individual Reps continued to step up and serve those who serve our nation, without any financial support. Everyman's Welfare Service has been run by volunteers for most of its 80 years.

Despite all the natural disadvantages and discouragements, God has proven Himself to be faithful in providing all that we need! People may read that and question the truth of that statement, but I (and all our Reps) can attest to this truth being absolute to this day!

I was sent a tiny 'Gospel of John' from one of our supporters that was handed to a 'Digger', and in the front cover it says, "From Everyman's Hut", 23/03/1949, With God's rich blessings"! It was such a joy to receive it and see how from 1949, EWS is still touching lives with hope and comfort.



This small Gospel of John is a replica of those given to soldiers in the Great War and is similar to the one Phil mentions in his article.

The coronavirus pandemic has certainly shaken everyone, but in this time of crisis, many have asked me, "Why are you not freaking out?", "Why is this pandemic not overwhelming you and causing great fear?" The only answer I have is, "I have a solid hope for my future and I have confidence in my tomorrow, whether I live or die, whether tomorrow is here on earth, or spending eternity in heaven" You see, I fully believe, God is in control. He is in control of my life, my today and my tomorrow, just as He is in control of this world and the worlds outside my knowledge and understanding!

I do not know the details of tomorrow. For now, the military exercises have been cancelled, our brew runs are in question and our Rec centres mostly closed. RSL's have also been closed and our visible sources of financial support seem to be on hold, BUT Everyman's does not belong to man, but to God! So, because it is not ours, I can confidently walk into each day and each situation and every conversation, knowing I am not alone, for God is with me, and for me, and overseeing my life and Everyman's Welfare Service.

continued page 3

More ways to give..... It's now possible to set up regular (or one-off) Direct Giving from your own bank account straight into ours! The details you need are:



BSB: 034-033
Account: 197255
Title: Everymans Welfare Service
Reference: Your Name

Phone or email us at Headquarters if you'd like a tax deductible receipt.

Giving has never been easier!

Everyman's Welfare Service

ABN 31 000 348 550

a company limited by guarantee



Yes Everyman's! We want to support the great work you do supporting the servicemen and women of the Australian Defence Force.

Name: Email:

Address: State: P/Code: Phone:

Enclosed is our tax deductible gift of \$ _____
(details overleaf)

Please make your cheque or money order payable to **EVERYMAN'S WELFARE SERVICE**

To pay by Credit card, please indicate whether: Visa MasterCard

Card Number CVV
(Last 3 digits on back)

Name on card Expiry Date:/...../..... Signature:

General Support **Vehicle Replacement Project**

Personal Support for.....

This is a one-time gift. This is a Monthly Quarterly Annual donation. Please charge my credit card:

Please send the following memorabilia (enter quantity in box):

Dog Tags @ \$15 **Pen @ \$5**